

规格/TECHNICAL SPECIFICATIONS

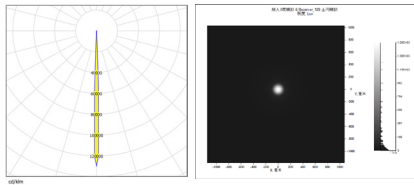
型号/MODEL NUMBER:	I LENS850-S35-M03- H
透镜尺寸/LENS DIMENSIONS:	Φ35.12*20.20MM
定位方式/FASTENING:	打胶/定位柱/Type or Pin
是否符合ROHS/ROHS COMPLIANT:	是/YES



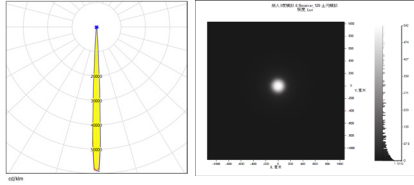
说明/CHARACTERISTIC:

1. 透镜有多种不同的配光角度。
The lens have multiple types beam angles.
2. 定位柱定位安装。
Pins for positioning.
3. 兼容多种灯珠。
Compatible with various lamp beads.
4. 适用于洗墙灯和投光灯。
Suitable for wall washing lighting and floodlights.
5. 与市面上同类镜头相比，光效更好，光斑更漂亮，兼容性更好。
Compared with similar type lenses on the market,with better light effect ,more beautiful spot and better compatibility.

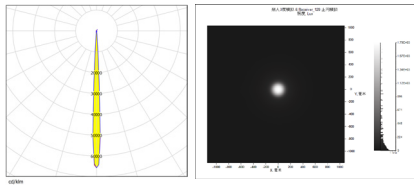
LED:CREE XPE2
 角度/FWHM:3.6°
 光效/Efficiency:92%
 峰值强度/Peakintensity:137CD/LM
 光学面数量/LED/each optic:1
 灯光颜色/Light colour:白色/White
 所需组件/Required components:



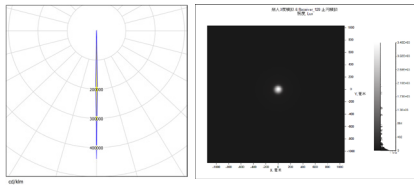
LED:CREE XPG
 角度/FWHM:5.5°
 光效/Efficiency:92%
 峰值强度/Peakintensity:62.6CD/LM
 光学面数量/LED/each optic:1
 灯光颜色/Light colour:白色/White
 所需组件/Required components:



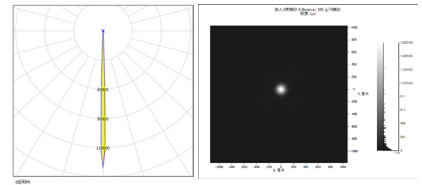
LED:CREE XPG2
 角度/FWHM:5.3°
 光效/Efficiency:92%
 峰值强度/Peakintensity:69.31CD/LM
 光学面数量/LED/each optic:1
 灯光颜色/Light colour:白色/White
 所需组件/Required components:



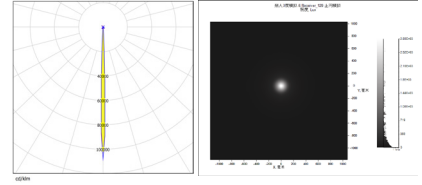
LED:CREE XQA
 角度/FWHM:1.8°
 光效/Efficiency:92%
 峰值强度/Peakintensity:457.4CD/LM
 光学面数量/LED/each optic:1
 灯光颜色/Light colour:白色/White
 所需组件/Required components:



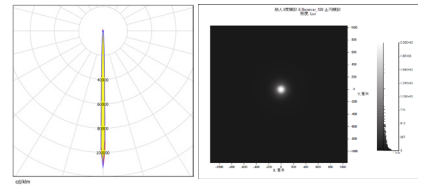
LED:CREE XQE
 角度/FWHM:3.5°
 光效/Efficiency:92%
 峰值强度/Peakintensity:150.2CD/LM
 光学面数量/LED/each optic:1
 灯光颜色/Light colour:白色/White
 所需组件/Required components:



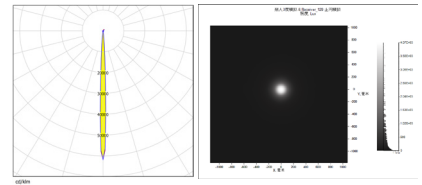
LED:OSRAM GW-QSSPA1
 角度/FWHM:3.5°
 光效/Efficiency:92%
 峰值强度/Peakintensity:114.1CD/LM
 光学面数量/LED/each optic:1
 灯光颜色/Light colour:白色/White
 所需组件/Required components:



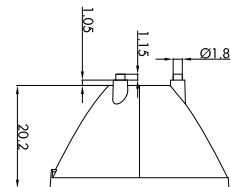
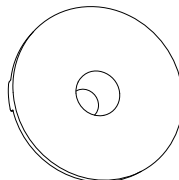
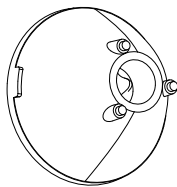
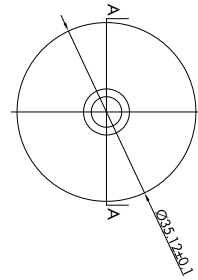
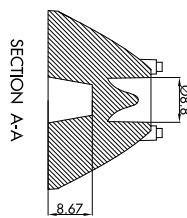
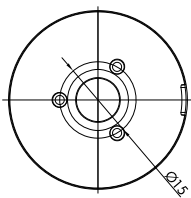
LED:OSRAM GR-CSHPM1.23
 角度/FWHM:3.2°
 光效/Efficiency:92%
 峰值强度/Peakintensity:116.6CD/LM
 光学面数量/LED/each optic:1
 灯光颜色/Light colour:白色/White
 所需组件/Required components:



LED:OSRAM GW CSSRM2
 角度/FWHM:4.8°
 光效/Efficiency:92%
 峰值强度/Peakintensity:65.2CD/LM
 光学面数量/LED/each optic:1
 灯光颜色/Light colour:白色/White
 所需组件/Required components:



CAD



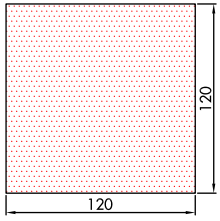
注意/NOTE:

1. 镜片表面应光滑无划痕、气泡、凹痕和黑点。

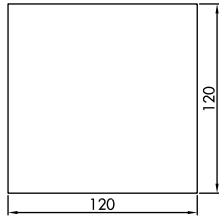
The surface of the lens should be smooth without scratches, bubbles, dents and black spots.

GENERAL TOLERANCES ISO2768-M (UNLESS STATED) 一般公差ISO 2768-M (除非另有说明)	MATERIAL 材质	PMMA or PC	DRAWING TITLE 绘图标题	I LENS850-S35-M03-H
LINEAR/线性	0~5±0.05		5~10±0.1	10~30±0.15
ANGULAR/角度	0°~10°±1°		10°~50°±0.5°	50°~120°±0.3°

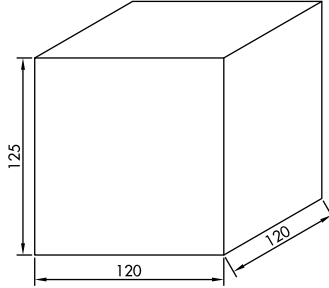
产品包装/PRODUCTS PACKAGING



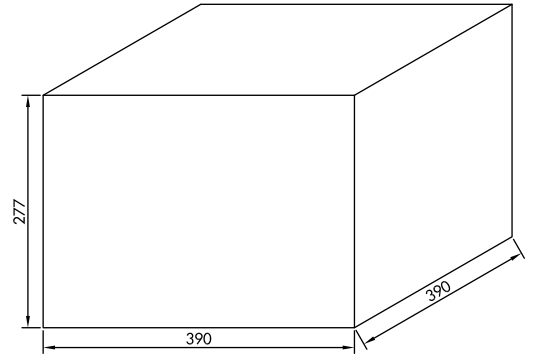
静电纸
MG tissue paper (19g)



层纸
cardboard (0.4mm)



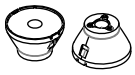
内盒
cardboard box(S)



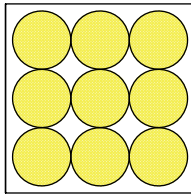
外盒
cardboard box(M) 2:1

型号/Part No.	数量/QTY
ILENS850-S35-M03-H	810pcs
静电纸/MG tissue paper (19g)	90pcs
层纸/cardboard (0.4mm)	108pcs
内盒/cardboard box(S)	18pcs
外盒/cardboard box(M)	1pcs

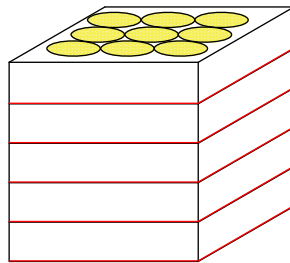
示意图/The schematic diagram:



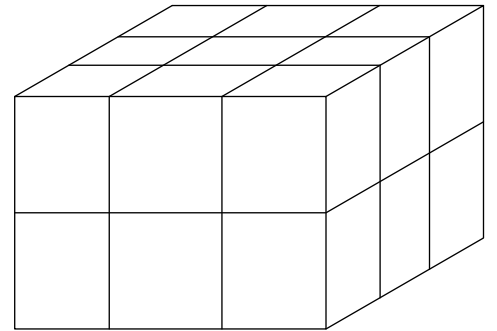
ILENS850-03-H850V
High:23.4mm



3pcs*3=9pcs



9pcs*5=45pcs



45pcs*18=810pcs