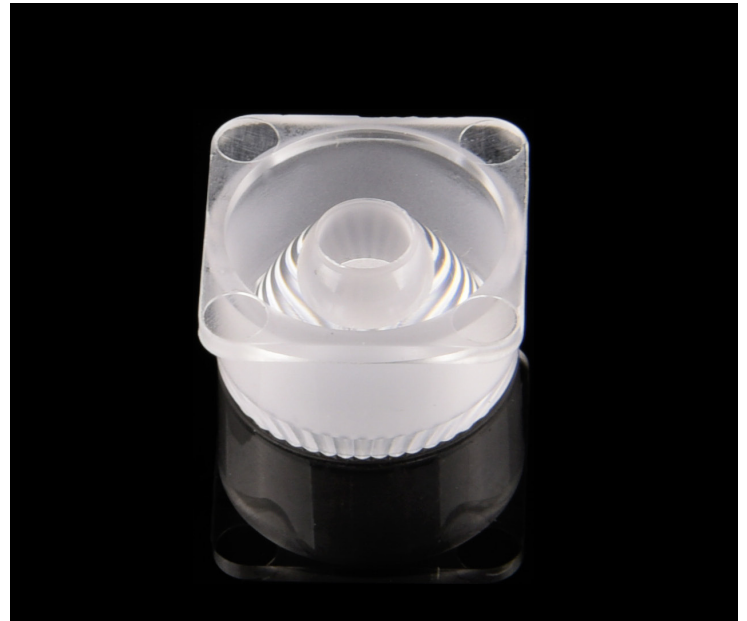


## 规格/TECHNICAL SPECIFICATIONS

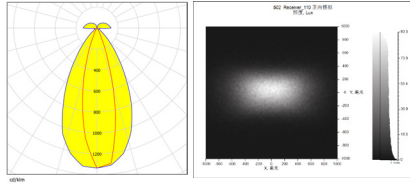
|                          |                       |
|--------------------------|-----------------------|
| 型号/MODEL NUMBER:         | I LENS502-S15-3045-NH |
| 透镜尺寸/LENS DIMENSIONS:    | 14.9*14.9*8.2MM       |
| 定位方式/FASTENING:          | 定位柱/Pin               |
| 是否符合ROHS/ROHS COMPLIANT: | 是/YES                 |



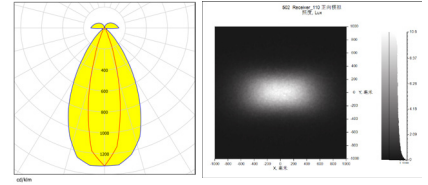
### 说明/CHARACTERISTIC:

1. 透镜有多种不同的配光角度。  
The lens have multiple types beam angles .
2. 一体化镜头无支架。  
The integrated lens has no holder.
3. 兼容多种灯珠。  
Compatible with various lamp beads.
4. 适用于道路护栏灯杆，桥梁灯。  
Application: road guardrail lighting, bridge lighting.
5. 与市面上同类镜头相比，光效更好，光斑更漂亮，兼容性更好。  
Compared with similar type lenses on the market,with better light effect ,more beautiful spot and better compatibility.

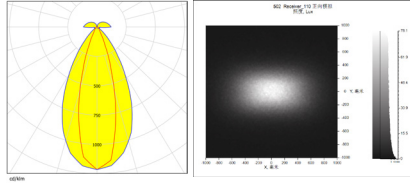
LED:LUMINUS 3030  
 角度/FWHM:26\*54°  
 光效/Efficiency:71%  
 峰值强度/Peakintensity:1.8CD/LM  
 光学面数量/LED/each optic:1  
 灯光颜色/Light colour:白色/White  
 所需组件/Required components:



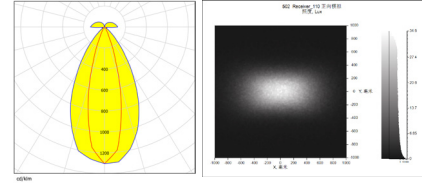
LED:SAMSUNG 3030  
 角度/FWHM:26\*55°  
 光效/Efficiency:71%  
 峰值强度/Peakintensity:1.8CD/LM  
 光学面数量/LED/each optic:1  
 灯光颜色/Light colour:白色/White  
 所需组件/Required components:



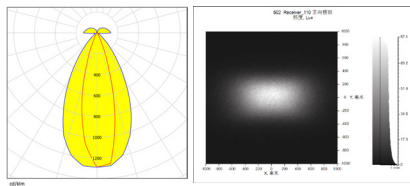
LED:LUMINUS 2835  
 角度/FWHM:29\*54°  
 光效/Efficiency:71%  
 峰值强度/Peakintensity:1.6CD/LM  
 光学面数量/LED/each optic:1  
 灯光颜色/Light colour:白色/White  
 所需组件/Required components:



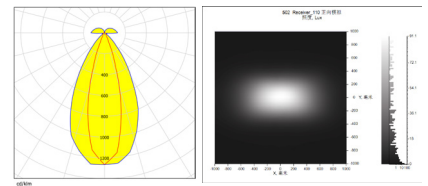
LED:SAMSUNG 2835  
 角度/FWHM:27\*55°  
 光效/Efficiency:71%  
 峰值强度/Peakintensity:1.8CD/LM  
 光学面数量/LED/each optic:1  
 灯光颜色/Light colour:白色/White  
 所需组件/Required components:



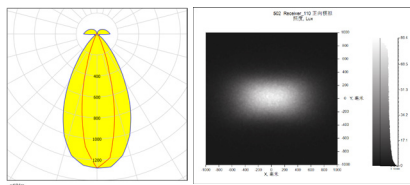
LED:CREE 3030  
 角度/FWHM:27\*55°  
 光效/Efficiency:71%  
 峰值强度/Peakintensity:1.7CD/LM  
 光学面数量/LED/each optic:1  
 灯光颜色/Light colour:白色/White  
 所需组件/Required components:



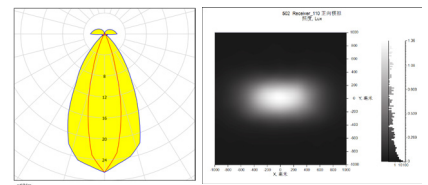
LED:LEXTAR 3030  
 角度/FWHM:28\*55°  
 光效/Efficiency:71%  
 峰值强度/Peakintensity:1.7CD/LM  
 光学面数量/LED/each optic:1  
 灯光颜色/Light colour:白色/White  
 所需组件/Required components:



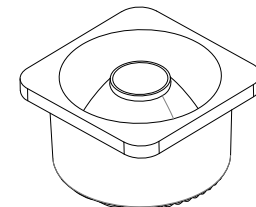
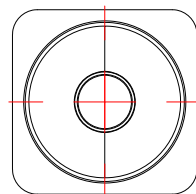
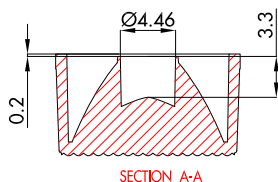
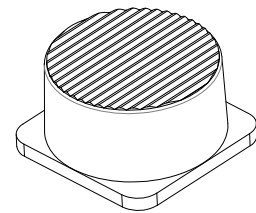
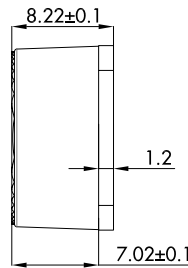
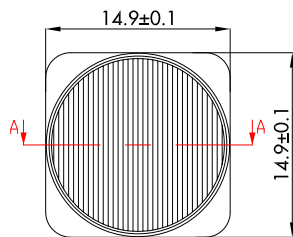
LED:CREE 2835  
 角度/FWHM:27\*55°  
 光效/Efficiency:71%  
 峰值强度/Peakintensity:1.7CD/LM  
 光学面数量/LED/each optic:1  
 灯光颜色/Light colour:白色/White  
 所需组件/Required components:



LED:LEXTAR 2835  
 角度/FWHM:27\*54°  
 光效/Efficiency:71%  
 峰值强度/Peakintensity:1.8CD/LM  
 光学面数量/LED/each optic:1  
 灯光颜色/Light colour:白色/White  
 所需组件/Required components:



CAD



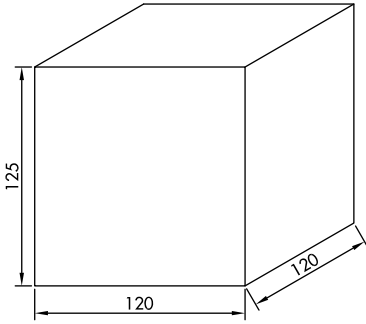
注意/NOTE:

1. 镜片表面应光滑无划痕、气泡、凹痕和黑点。

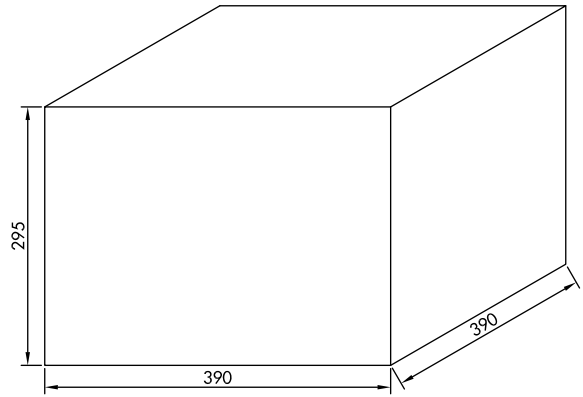
The surface of the lens should be smooth without scratches, bubbles, dents and black spots.

| GENERAL TOLERANCES ISO2768-M (UNLESS STATED)<br>一般公差ISO 2768-M (除非另有说明) | MATERIAL<br>材质 | PC | DRAWING TITLE<br>绘图标题 | ILENS502-S15-3045-NH |
|---|----------------|----|-----------------------|----------------------|
| LINEAR/线性   | 0~5±0.05       |    | 5~10±0.1              | 10~30±0.15           |
| ANGULAR/角度  | 0°~10°±1°      |    | 10°~50°±0.5°          | 50°~120°±0.3°        |

# 产品包装/Products Packaging



内盒  
cardboard box(S)



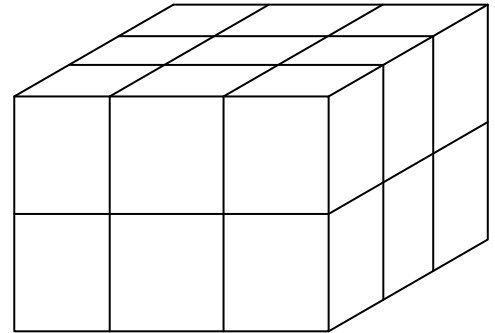
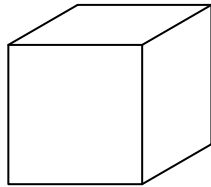
外盒  
cardboard box(M) 2:1

| 型号/Part No.          | 数量/QTY   |
|----------------------|----------|
| ILENS502-S15-3045-NH | 12600pcs |
| PE袋/PE bag           | 700pcs   |
| 内盒/cardboard box (S) | 18pcs    |
| 外盒/cardboard box (M) | 1pcs     |

示意图/The schematic diagram :



700PCS



700pcs\*18=12600pcs