

## 规格/TECHNICAL SPECIFICATIONS

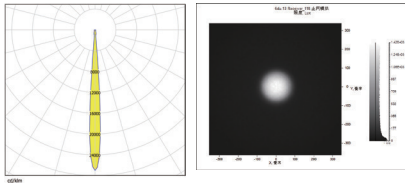
型号/MODEL NUMBER:	I LENS 88-S20-M06-NH
透镜尺寸/LENS DIMENSIONS:	Φ21.2*10.0MM
定位方式/FASTENING:	定位柱/PIN
是否符合ROHS/ROHS COMPLIANT:	是/YES



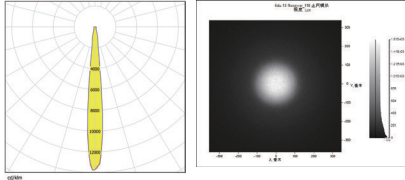
### 说明/CHARACTERISTIC:

1. 透镜有多种不同的配光角度。  
The lens have multiple types beam angles.
2. 一体防水透镜，定位柱定位安装。  
Waterproof lens. use pins for fix.
3. 兼容多种灯珠。  
Compatible with various lamp beads.
4. 适用于洗墙灯和投光灯。  
Suitable for wall washing lighting and floodlights.
5. 与市面上同类镜头相比，光效更好，光斑更漂亮，兼容性更好。  
Compared with similar type lenses on the market,with better light effect ,more beautiful spot and better compatibility.

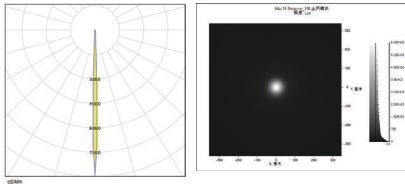
LED:CREE XPE2  
 角度/FWHM:7.93°  
 光效/Efficiency:90%  
 峰值强度/Peakintensity:30.90CD/LM  
 光学面数量/LED/each optic:1  
 灯光颜色/Light colour:白色/White  
 所需组件/Required components:



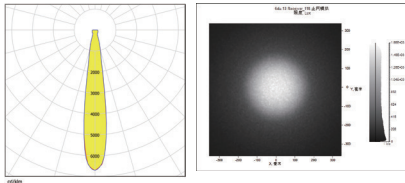
LED:CREE XPG2  
 角度/FWHM:11°  
 光效/Efficiency:90%  
 峰值强度/Peakintensity:15.60CD/LM  
 光学面数量/LED/each optic:1  
 灯光颜色/Light colour:白色/White  
 所需组件/Required components:



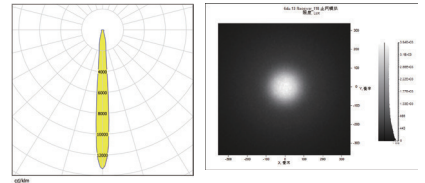
LED:CREE XQA  
 角度/FWHM:3.4°  
 光效/Efficiency:91%  
 峰值强度/Peakintensity:95.10CD/LM  
 光学面数量/LED/each optic:1  
 灯光颜色/Light colour:白色/White  
 所需组件/Required components:



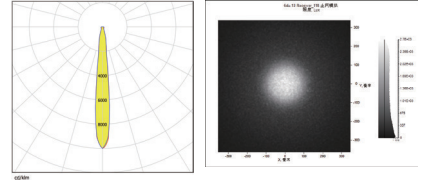
LED:CREE XML2  
 角度/FWHM:16.6°  
 光效/Efficiency:88%  
 峰值强度/Peakintensity:7.90CD/LM  
 光学面数量/LED/each optic:1  
 灯光颜色/Light colour:白色/White  
 所需组件/Required components:



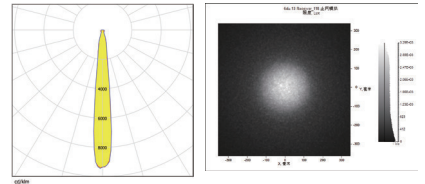
LED:OSRAM GW-PUSRA1-EM  
 角度/FWHM:9.7°  
 光效/Efficiency:90%  
 峰值强度/Peakintensity:15.00CD/LM  
 光学面数量/LED/each optic:1  
 灯光颜色/Light colour:白色/White  
 所需组件/Required components:



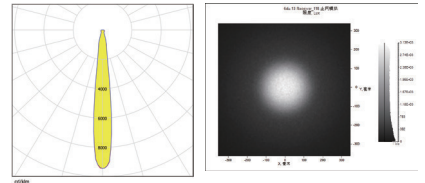
LED:NICHIA NVSW219B  
 角度/FWHM:11.8°  
 光效/Efficiency:89%  
 峰值强度/Peakintensity:11.82CD/LM  
 光学面数量/LED/each optic:1  
 灯光颜色/Light colour:白色/White  
 所需组件/Required components:



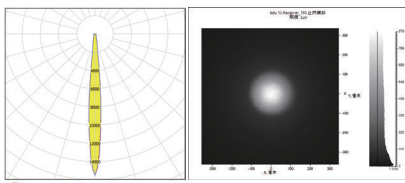
LED:NICHIA NVSW119CT  
 角度/FWHM:12.8°  
 光效/Efficiency:90%  
 峰值强度/Peakintensity:11.10CD/LM  
 光学面数量/LED/each optic:1  
 灯光颜色/Light colour:白色/White  
 所需组件/Required components:



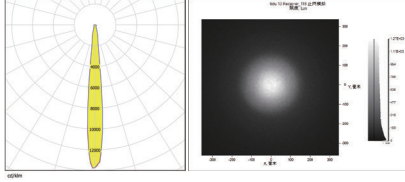
LED:SEOUL Z5M4  
 角度/FWHM:13.4°  
 光效/Efficiency:90%  
 峰值强度/Peakintensity:10.73CD/LM  
 光学面数量/LED/each optic:1  
 灯光颜色/Light colour:白色/White  
 所需组件/Required components:



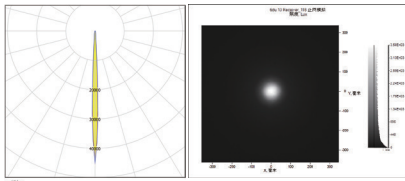
LED:CREE XPE2  
 角度/FWHM:9.6°  
 光效/Efficiency:85%  
 峰值强度/Peakintensity:19.00CD/LM  
 光学面数量/LED/each optic:1  
 灯光颜色/Light colour:白色/White  
 所需组件/Required components:



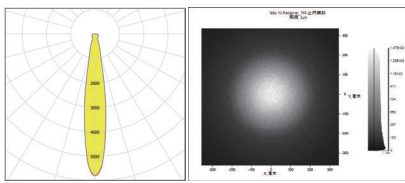
LED:CREE XPG2  
 角度/FWHM:11.9°  
 光效/Efficiency:84%  
 峰值强度/Peakintensity:12.7CD/LM  
 光学面数量/LED/each optic:1  
 灯光颜色/Light colour:白色/White  
 所需组件/Required components:



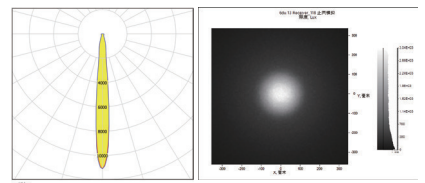
LED:CREE XQA  
 角度/FWHM:4.73°  
 光效/Efficiency:87%  
 峰值强度/Peakintensity:52.50CD/LM  
 光学面数量/LED/each optic:1  
 灯光颜色/Light colour:白色/White  
 所需组件/Required components:



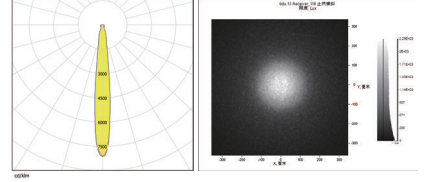
LED:CREE XML2  
 角度/FWHM:17.1°  
 光效/Efficiency:82%  
 峰值强度/Peakintensity:7.50CD/LM  
 光学面数量/LED/each optic:1  
 灯光颜色/Light colour:白色/White  
 所需组件/Required components:



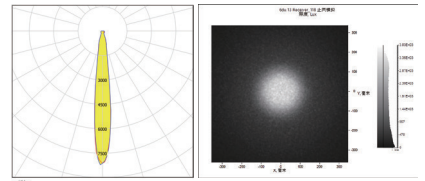
LED:OSRAM GW-PUSRA1-EM  
 角度/FWHM:10.5°  
 光效/Efficiency:85%  
 峰值强度/Peakintensity:13.70CD/LM  
 光学面数量/LED/each optic:1  
 灯光颜色/Light colour:白色/White  
 所需组件/Required components:



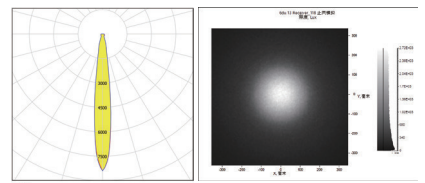
LED:NICHIA NVSW219B  
 角度/FWHM:12.8°  
 光效/Efficiency:82%  
 峰值强度/Peakintensity:10.50CD/LM  
 光学面数量/LED/each optic:1  
 灯光颜色/Light colour:白色/White  
 所需组件/Required components:

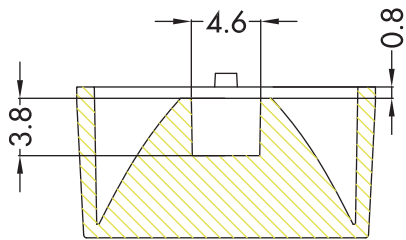
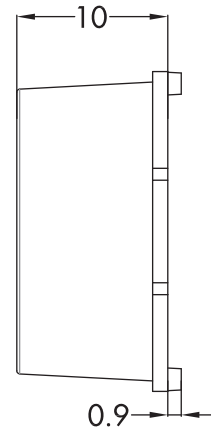
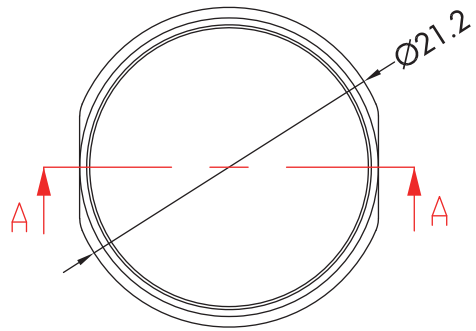


LED:NICHIA NVSW119CT  
 角度/FWHM:13.2°  
 光效/Efficiency:83%  
 峰值强度/Peakintensity:10.45CD/LM  
 光学面数量/LED/each optic:1  
 灯光颜色/Light colour:白色/White  
 所需组件/Required components:

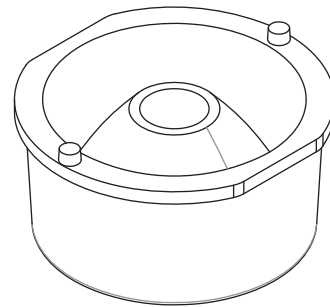
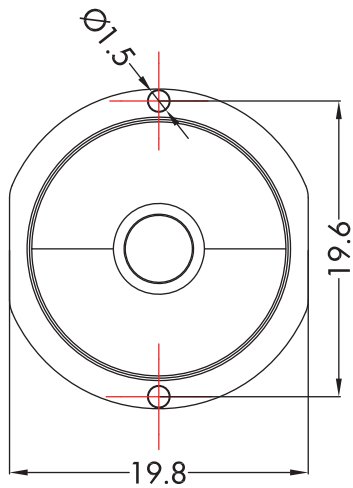
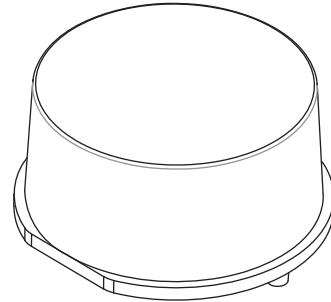


LED:SEOUL Z5M4  
 角度/FWHM:13.4°  
 光效/Efficiency:85%  
 峰值强度/Peakintensity:10.50CD/LM  
 光学面数量/LED/each optic:1  
 灯光颜色/Light colour:白色/White  
 所需组件/Required components:





SECTION A-A



注意/NOTE:

1. 镜片表面应光滑无划痕、气泡、凹痕和黑点。

The surface of the lens should be smooth without scratches, bubbles, dents and black spots.

GENERAL TOLERANCES ISO2768-M (UNLESS STATED) 一般公差ISO 2768-M (除非另有说明)	MATERIAL 材质	PMMA or PC	DRAWING TITLE 绘图标题	ILENS88-S20-M06-NH
LINEAR/线性	0~5±0.05	5~10±0.1	10~30±0.15	
ANGULAR/角度	0°~10°±1°	10°~50°±0.5°	50°~120°±0.3°	

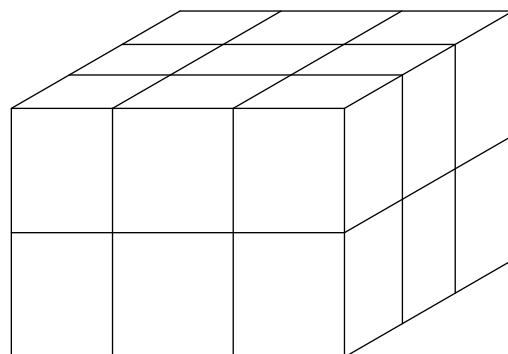
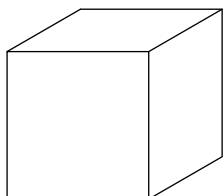
# 产品包装/Products Packaging

型号/Part No.	数量/QTY
ILENS88-S20-A \$* -NH	6300pcs
PE袋/PE bag	350pcs
内盒cardboard box(S)	18pcs
外盒cardboard box(M)	1pcs

示意图/The schematic diagram :



350PCS



350pcs\*18=6300pcs